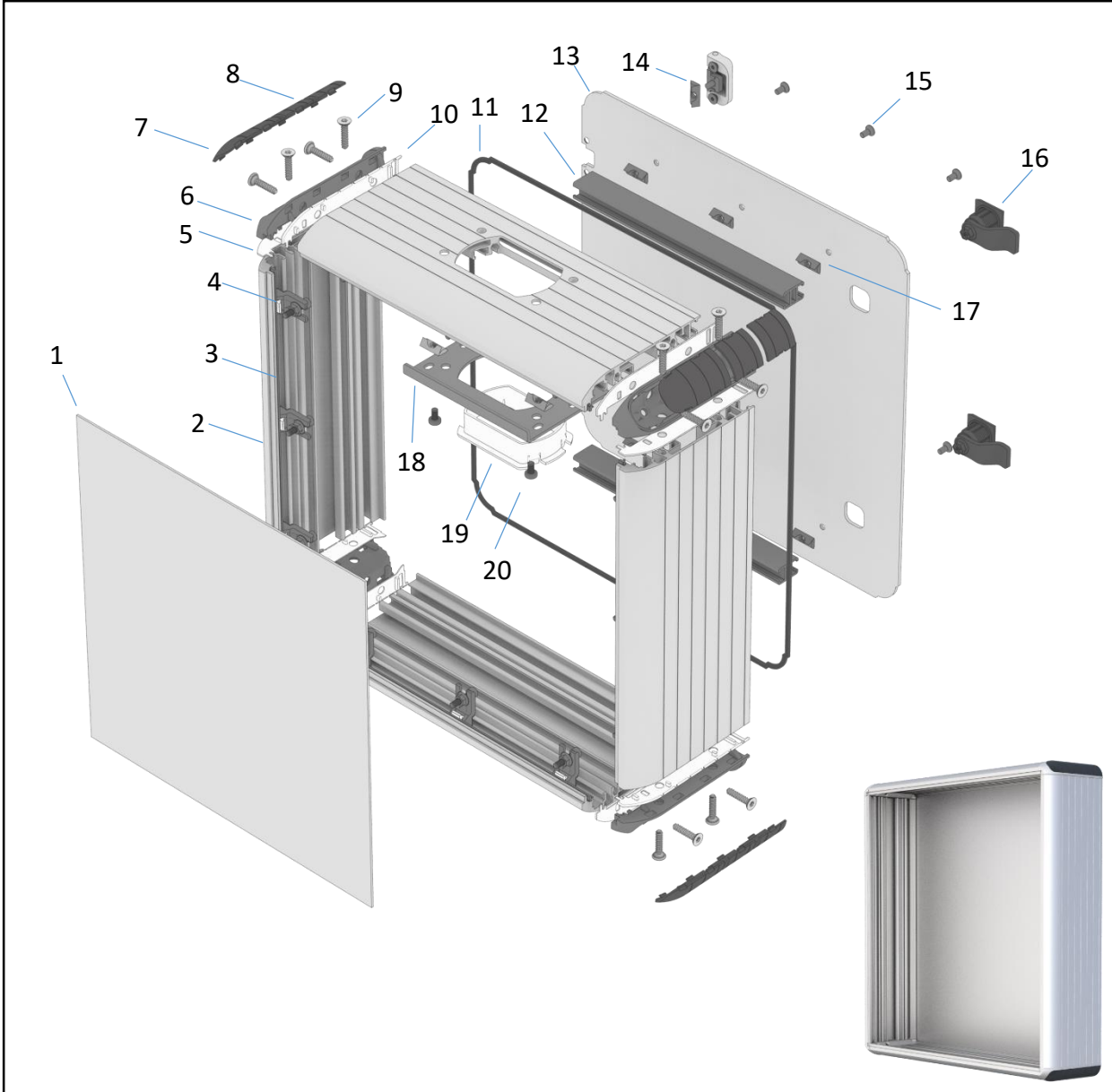
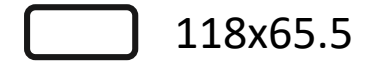


ECO 120 PANEL (300x300)



NO	PRODUCT CODE	DESCRIPTION	QTY
1	LVH2.00.3030	300x300 2mm FRONT SHEET	1
2	HPECO-120-001	295 MM PROFILE	4
3	PLSECO-005	300 MM PANEL GASKET	4
4	ZMK-001-00	ZAMAK GROUP	12
5	PLSECO-120-002	ECO 120 GASKET (RIGHT)	4
6	HPECO-120-002	ECO 120 PANEL CORNER	4
7	PLSECO-001	ECP PANEL COVER	4
8	PLSECO-004	ECO PANEL COVER (ADDITIONAL)	8
9	CVT-040	M6x25 PANEL PROFILE SCREW	16
10	PLSECO-120-001	ECO 120 GASKET (LEFT)	4
11	FTL-001	1200 MM PANEL WICK	1
12	HPRO-001	220 MM H PROFILE	2
13	LVH.ARKA.3030	340X340 MM 3 MM BACK SHEET	1
14	MNT-001-00	HIDGE GROUP	2
15	CVT-043	M5X10 SCREW	6
16	KLT-001-00	LOCK GROUP	2
17	CVT-044	M5 SPRING NUT	8
18	SCECO-120-1	ECO 120 PANEL CONNECTION SHEET	1
19	PLSECO-007	PANEL CABLE PROTECTION SHEET	1
20	CVT-046	M5X10 SCREW	2

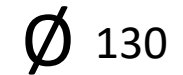
CONNECTION POINT



COMPATIBLE MODULES

TK045.400
TK045.830

TK060.830
TK060.830 + TK060.835
TK060.830 + TK060.831
TK060.826



COMPATIBLE MODULES

TK060.320 TK120.320
TK060.321 TK120.400
TK060.400 TK120.401
TK060.401 TK120.843
TK060.843 TK120.844
TK060.844 TK120.845
TK060.845 TK120.846
TK060.846