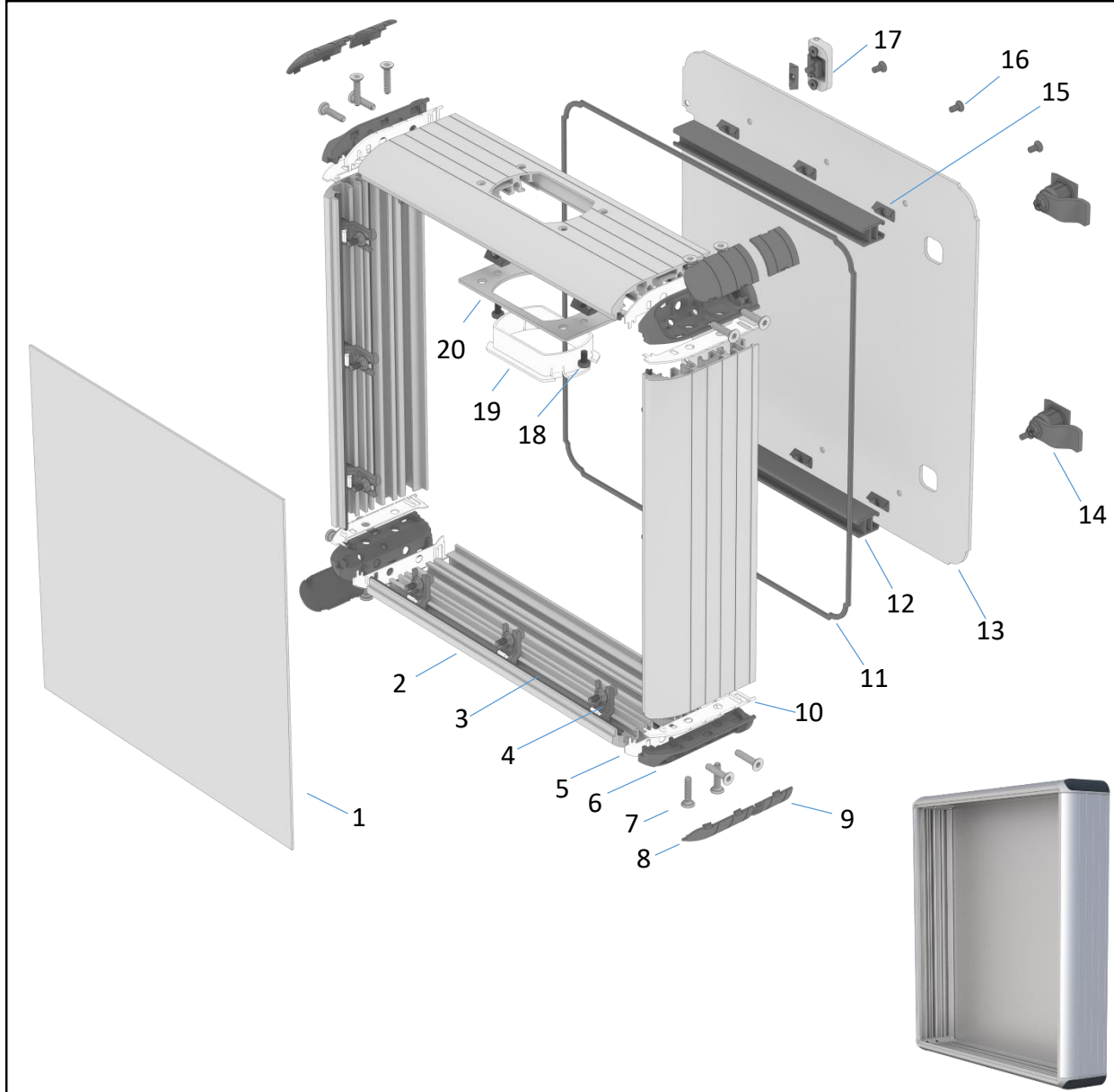
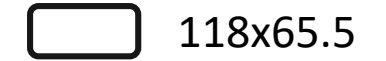


ECO 090 PANEL (300x300)



NO	PRODUCT CODE	DESCRIPTION	QTY
1	LVH2.00.3030	300x300 2mm FRONT SHEET	1
2	HPECO-090-001	295 MM PROFILE	4
3	PLSECO-005	300 MM PANEL GASKET	4
4	ZMK-001-00	ZAMAK GROUP	12
5	PLSECO-090-001	ECO 090 GASKET (LEFT)	4
6	HPECO-090-002	ECO 090 PANEL CORNER	4
7	CVT-040	M6x25 PANEL PROFILE GASKET	16
8	PLSECO-001	ECO PANEL COVER	4
9	PLSECO-004	ECO PANEL COVER(ADDITIONAL)	4
10	PLSECO-090-002	ECO 090 GASKET (RIGHT)	4
11	FTL-001	1200 MM PANEL WICK	1
12	HPRO-001	220 MM H PROFILE	2
13	LVH.ARKA.3030	340X340 MM 3 MM BACK SHEET	1
14	KLT-001-00	LOCK GROUP	2
15	CVT-044	M5 SPRING NUT	8
16	CVT-043	M5X10 SCREW ((SPRUE HEADED)	6
17	MNT-001-00	HIDGE GROUP	2
18	CVT-046	M5X10 SCREW	2
19	PLSECO-007	ECO PANEL CABLE PROTECTION PLASTIC	1
20	SCECO-090-1	ECO 090 CONNECTION SHEET	1

CONNECTION POINT



COMPATIBLE MODULES

TK045.400

TK045.830

TK060.830

TK060.830 + TK060.835

TK060.830 + TK060.831

TK060.826